

Functions and features

White balance	Balances the color temperature in your image
HbE enhancement	Highlights the mucosal capillary morphology
Image enhancement	Structure/Edge/Color
IRIS	Average, Peak
Storage	USB
Freeze and playback	Freezes a real-time image and plays it back
Digital zoom	1/1.2/1.5/2x
Optical chromoendoscopy techniques	CBI illumination mode

VGT/VCC

	Model	Working length	Diameter of distal end	Diameter of insertion tube	Diameter of instrument channel	Depth	View of field	Range of bending
Video Gastroscopes	VGT-Q30	1050mm	9.6mm	9.6mm	2.8mm	3-100mm	140°	U210°D90°L100°R100°
	*VGT-Q30J	1050mm	9.6mm	9.6mm	2.8mm	3-100mm	140°	U210°D90°L100°R100°
	*VGT-1T30J	1050mm	10.5mm	10.5mm	3.2mm	3-100mm	140°	U210°D90°L100°R100°
Video Colonoscopes	VCC-Q30I	1300mm	12.8mm	12.8mm	3.7mm	3-100mm	140°	U180°D180°L160°R160°
	VCC-Q30L	1650mm	12.8mm	12.8mm	3.7mm	3-100mm	140°	U180°D180°L160°R160°
	*VCC-Q30JI	1300mm	12.8mm	12.8mm	3.7mm	3-100mm	140°	U180°D180°L160°R160°
	*VCC-Q30JL	1650mm	12.8mm	12.8mm	3.7mm	3-100mm	140°	U180°D180°L160°R160°
	VCC-1T30L	1650mm	12.8mm	12.8mm	4.2mm	3-100mm	140°	U180°D180°L160°R160°

(*: Forwarding water-jet)

VBC

	Model	Working Length	Diameter of distal end	Diameter of insertion tube	Diameter of instrument channel	Depth	View of field	Range of bending
Video Bronchoscopes	VBC-Q30	600mm	4.9mm	4.9mm	2.0mm	3-50mm	120°	U160°D130° SD
	VBC-1T30	600mm	5.8mm	5.7mm	2.0mm	3-50mm	120°	U160°D130° HD

VRL

	Model	Working Length	Diameter of distal end	Diameter of insertion tube	Diameter of instrument channel	Depth	View of field	Range of bending
Video Laryngoscopes	VRL-Q30	450mm	4.9mm	4.9mm	2.0mm	2-50mm	120°	U130°D130°
	VRL-1T30	450mm	5.8mm	5.7mm	2.0mm	2-50mm	120°	U130°D130°

Shanghai Aohua Photoelectricity Endoscope CO.,LTD.

AOHUA

China

No.66, Lane133, Guangzhong Road,Minhang District, Shanghai, P.R.China.(Postcode: 201108)

Tel: 86-21-52210929

Email: marketing@aohua.com
website: www.aohua.com/en

Germany

Fichtenstrasse 27,
Brunnthal, Munich

Tel: +49(0)81 04/8908-10

See the Manual for details of contraindications or precautions.

v4.0_2304

AOHUA

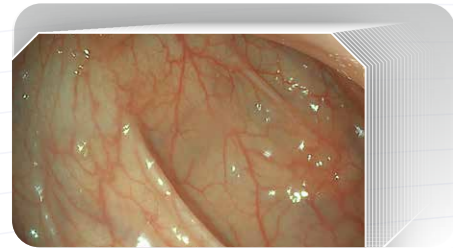


AQ-100
Video Endoscopy System

A versatile HD video endoscopy system satisfies multiple department with a variety of configuration

The AQ-100 portfolio offers you a wide range of endoscopes and functions. The versatile and extended HD solution is pleasantly endorsed by physicians. Choose the configuration wisely and enjoy the benefits of this reliable system.

Superior images



HD image resolution

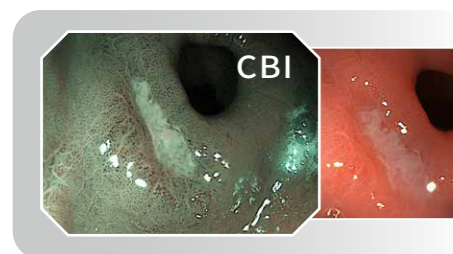
The AQ-100 adapts a HD CMOS sensor to provide a high quality image. It produces a clear and sharp contrast on the edge between different tissues, displaying a superior image with more details to you.



LED and xenon light source available

The xenon lamp has a brilliant color rendering index, while the LED provides a higher contrast on the CBI chromoendoscopy without lowering the brightness. This flexible duo covers all of your different needs.

Convenient staining



CBI optical chromoendoscopy technology

Switch easily between a white light and the optical staining mode CBI. Optical chromoendoscopy (CBI) demonstrates a higher contrast between mucus and blood vessel in the GI tract, without sacrificing the brightness of the image anymore.



Capable of more



Large channel and waterjet function

The 3.2mm working channel of the gastroscope and 4.2mm for colonoscope widens the options for endoscopic instruments. With our waterjet facility, more complex operation can be tackled. The efficient water flushing assures a clear view at all time.



Wider compatibility

Besides GI diagnostic and therapeutic endoscopes, the AQ-100 is also compatible with bronchoscopes and ENT scopes.

