



ZUMAX MEDICAL CO., LTD.

5 ZHIYING STREET, SUZHOU NEW DISTRICT

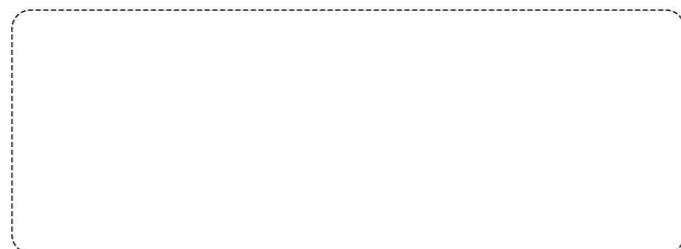
JIANGSU, CHINA 215129

TEL: +86 512 66650502

FAX: +86 512 66650836

EMAIL: SALES@ZUMAXMEDICAL.COM

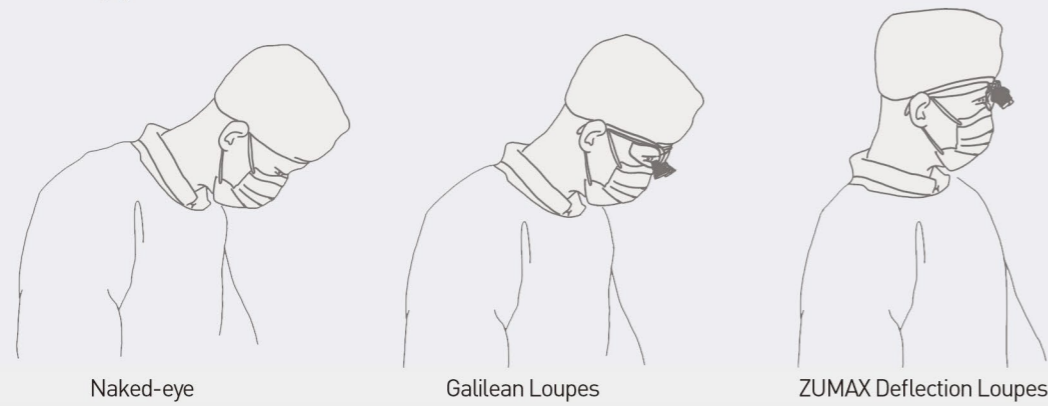
HTTP://WWW.ZUMAXMEDICAL.COM



BINOCULAR LOUPES
MEDICAL HEADLIGHTS

DFK Binocular Loupes

Deflection type



Naked-eye

Galilean Loupes

ZUMAX Deflection Loupes



With spectacle lenses

- ◆ Deflection type Loupes have excellent ergonomics, and the users' vision is easily integrated.
- ◆ Wide field of vision.
- ◆ Auxiliary functions.
 - 1) Wireless headlights can be added.
 - 2) Quick adjustment of pupil distance.
 - 3) Custom made for individual doctor
 - 4) Usable along with doctor's own glasses (optional)

Without spectacle lenses

Specifications:

Model	Magnification	Working distance
DFK	3.0x	400mm
DFK	3.0x	450mm
DFK	3.0x	500mm
DFK	3.0x	550mm
DFK	4.0x	400mm
DFK	4.0x	450mm
DFK	4.0x	500mm
DFK	4.0x	550mm
DFK	5.0x	400mm
DFK	5.0x	450mm
DFK	5.0x	500mm
DFK	5.0x	550mm



Frame color

- Blue
- Gray
- Red



DFK Binocular Loupes



HL8200 Headlight combined with DFK Binocular Loupes



HL8260 Headlight combined with DFK Binocular Loupes

SLT TTL Binocular Loupes

(Kepler Optics)



- ◆ Kepler optics, achromatic lens, large depth of field and field of view, high resolution, up to 6x magnification
- ◆ High grade glass lens, edge-to-edge clarity, no distortion
- ◆ Multi-coated lens, antifog and mould proof, 99.5% optical transmissivity
- ◆ Custom made on pupil distance, diopter and vision angle, perfect fit for dentists' behavior
- ◆ Ultra lightweight, all-day-wear, Sport Frame model: 80 g, Titanium Frame model: 75g

Specifications:

Magnification	Working distance	Field of view
4.0x	340mm	51mm
4.0x	420mm	65mm
4.0x	460mm	70mm
4.0x	500mm	75mm
4.0x	550mm	82mm
5.0x	340mm	48mm
5.0x	420mm	60mm
5.0x	460mm	66mm
5.0x	500mm	71mm
5.0x	550mm	78mm
6.0x	340mm	38mm
6.0x	420mm	46mm
6.0x	460mm	50mm
6.0x	500mm	54mm
6.0x	550mm	60mm



All lenses are multi-coated and anti-reflective, combining with infinity corrected optical system.



Soft silicone nose pad.



Two kinds of frames for your option which provides the best comfort at work.

1. Sport Frame, 3 colors for your optional.
2. Titanium Frame, 4 colors available, Black, Dark brown, Grey, Red



All loupes include a protective hard case, microfiber wipe cloth, neck strap.

SLT TTL Binocular Loupes

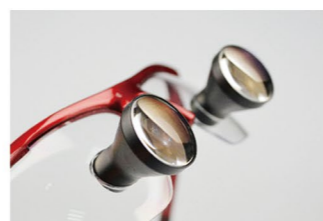


- ◆ 2.0x, 2.5x and 3.0x magnifications available
- ◆ Extremely high resolution
- ◆ Precise Optics
- ◆ Custom Fit and Custom Working Distance
- ◆ Greatest Brightness and Depth of Field
- ◆ Ultra-lightweight, as little as 1.2 oz. (36g) (including the frame).



Specifications:

Magnification	Working distance	Field of view
2.0x	340mm	100mm
2.0x	420mm	110mm
2.0x	460mm	130mm
2.0x	500mm	140mm
2.5x	340mm	70mm
2.5x	420mm	80mm
2.5x	460mm	90mm
2.5x	500mm	100mm
2.5x	550mm	120mm
3.0x	340mm	60mm
3.0x	420mm	70mm
3.0x	460mm	80mm
3.0x	500mm	90mm
3.0x	550mm	100mm



All lenses are multi-coated and anti-reflective, combining with infinity corrected optical system.



Soft silicone nose pad.



Two kinds of frames for your option which provides the best comfort at work.
1.Sport Frame,3 colors for your optional.
2.Titanium Frame,4 colors available, Black,Dark brown, Grey, Red



All loupes include a protective hard case, microfiber wipe cloth,neck strap.

SLH Binocular Loupes

Kepler Optics 4x / 5x / 6x



SLH Binocular Loupes

- ◆ Kepler optics, achromatic lens, no distortion
- ◆ Multi-coated, anti-reflective, with edge-to-edge clarity
- ◆ Individual adjustment for pupil distance, easy to use, for any height and angle
- ◆ Water proof, easy to clean

- ◆ 3 magnification options: 4X, 5X, 6X
- ◆ 4 working distance options: 340 mm, 420 mm, 460 mm, 500 mm
- ◆ Applicable in cardiothoracic surgery, cardiovascular surgery, neurosurgery, ENT, general surgery, ophthalmology, gynecology, dentistry, plastic surgery and dermatology etc.



SLE Binocular Loupes

Specifications:

Magnification	Working distance	Field of view
4.0x	340mm	55mm
4.0x	420mm	65mm
4.0x	460mm	75mm
4.0x	500mm	85mm
5.0x	340mm	45mm
5.0x	420mm	55mm
5.0x	460mm	60mm
5.0x	500mm	65mm
6.0x	340mm	40mm
6.0x	420mm	47mm
6.0x	460mm	50mm
6.0x	500mm	58mm



One lock lever



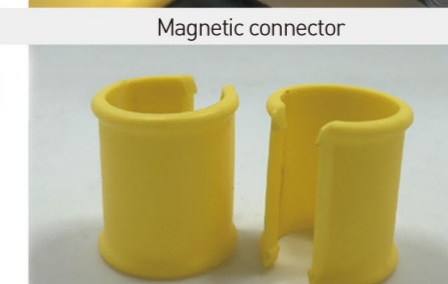
Magnetic connector



Vertical displacement knob



Infection control shield



Infection control shield- 1



Protection cover

SLK Binocular Loupes



SLK Binocular Loupes (with sport frame)

- ◆ High grade glass lens, multi-coated, high optical transmissivity, large field of view with edge-to-edge clarity
- ◆ Long working distance for better ergonomics
- ◆ Double-hinge design, allowing vertically 0 - 40 degree adjustable, fit for different working positions
- ◆ One-handed quick adjustment for different pupil distances

One-handed Quick Adjustment for different pupil distances

- ◆ Quickly synchronized adjustment for pupil distance bilaterally only by one hand
- ◆ Workable by either hand, for pupil distance from 46 - 82 mm

Specifications:

Magnification	Working distance	Field of view
2.5x	340mm	85mm
2.5x	420mm	100mm
2.5x	460mm	110mm
2.5x	500mm	120mm
3.0x	340mm	70mm
3.0x	420mm	85mm
3.0x	460mm	95mm
3.0x	500mm	105mm
3.5x	340mm	60mm
3.5x	420mm	75mm
3.5x	460mm	85mm
3.5x	500mm	95mm



SL Series Binocular Loupes



SLF Binocular Loupes (with sport frame)

- ◆ Multi-coated high grade glass lenses produce crystal-clear images.
- ◆ The Loupes employ eyepiece of very large view field diameter. The depth of focus is deep, and object can be seen stereoscopically with actual feeling of distance.
- ◆ The angle of the loupes can be adjusted between 0°-40 ° with ease, and fatigue is minimized even after prolonged use.
- ◆ 6mm up and down displacement. Pupil distance can be adjusted individually, which could be suited for all kind of faces.
- ◆ Adapts to headlight of Zumax.
- ◆ Smart design, convenient for mobile diagnosis.

Specifications:

Magnification	Working distance	Field of view
2.5x	340mm	80mm
2.5x	420mm	100mm
2.5x	460mm	110mm
2.5x	500mm	120mm
3.0x	340mm	70mm
3.0x	420mm	84mm
3.0x	460mm	92mm
3.0x	500mm	100mm
3.5x	340mm	60mm
3.5x	420mm	72mm
3.5x	460mm	78mm
3.5x	500mm	84mm

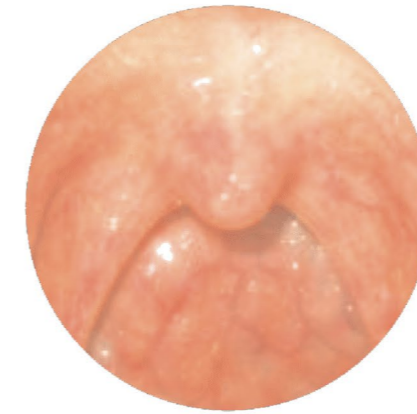


SLE Binocular Loupes (with Titanium frame)



SLH Binocular Loupes (with headband)

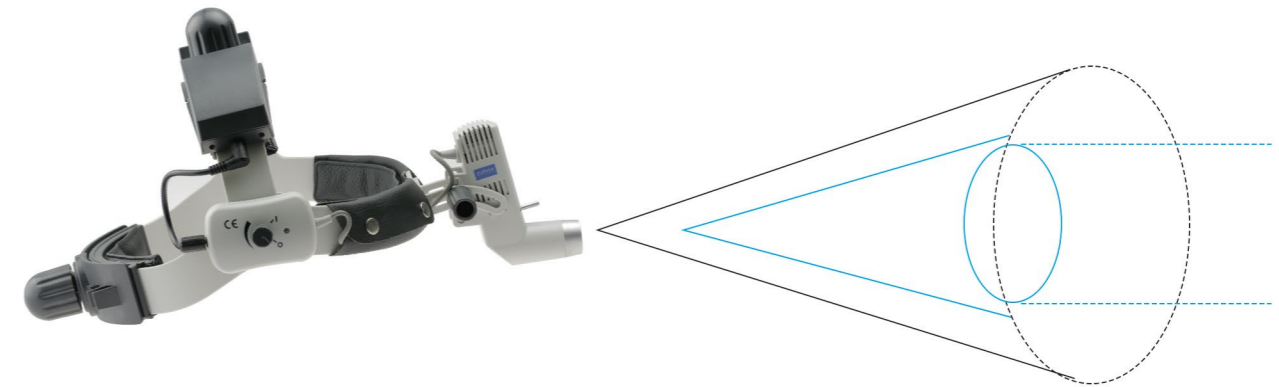
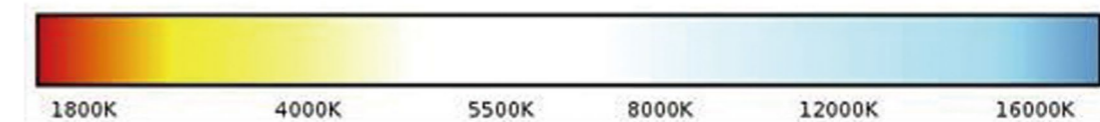
HL8000 Headlight



6500K



5000K



◆ Light Source: Our LED lamp has no heat of traditional Halogen headlight. With a color temperature of 5000 Kelvin, it supplies bright, white, shadow-free light allowing the doctor to see tissue characteristics without distortion.

◆ Adjustable: Continuously adjustable spot size and brightness control.

◆ Rechargeable: Enjoy the flexibility of operating the headlight using the rechargeable Lithium battery, free of the direct power source. It is one of the most comfortable lightweight headlights and suitable for all kinds of surgery.

◆ Battery Power indicator.

◆ Compatible with any Binocular Loupes of Zimax.

◆ Smart design, convenient for mobile diagnosis.

◆ Optional yellow filter reduces blue light, preventing premature curing of composite.

Zimax



	With Portable Battery Pack	With Cordless Battery Pack
Optical Specifications		
Diameter of the light spot at a distance of 420mm	20-80mm	20-80mm
Illumination at 200mm working distance	>75000LX	>75000LX
Adjustable Range		
Fluctuation distance	12.5mm	12.5mm
Direction of Illumination	Vertically $\pm 25^\circ$ adjustable	Vertically $\pm 25^\circ$ adjustable
Weight		
Head lamp (excluding headband)	69g	69g
Electrical specifications		
Illumination Source	Extremely bright light, 5W LED, continuous burning life of 20,000 hours	Extremely bright light, 5W LED, continuous burning life of 20,000 hours
Battery	7.4V Lithium battery 4400mAh	7.4V Lithium battery 1800mAh
Battery Run-time	≥ 7 hours	≥ 3 hours
Input voltage	100-240VAC	100-240VAC
Maximum Power input	15VA	24VA
Electrical Safety standard	IEC60601.1, class II equipment	IEC60601.1, class II equipment

Order Information

555-0010	HL8000 headlight, with white 4400mAh battery head-set socket, longer spring cable, power adapter, metal case
556-0080	Cordless HL8000 headlight Set, with Cordless battery pack, wall mount charger, a short cable, power adapter, metal case
552-9050	White Battery, 7.4V 4400mAh for HL8000 headlight, headphone jack
556-9080	Cordless HL8000 battery, 7.4V 1800mAh
556-9190	Wall Mout / Desk Charger for Cordless headlight
980-123X	12V 2A Power adapter for charger, for Cordless headlight
980-122X	12V 1.25A Power adapter for charger, for headlight
552-9048	Spring cable with headphone jack, long
552-9083	Cable with headphone jack, Short, for Cordless headlight



Clinical application: the examination and operation of the Dept. of Dentistry, ENT, Gynaecology etc.



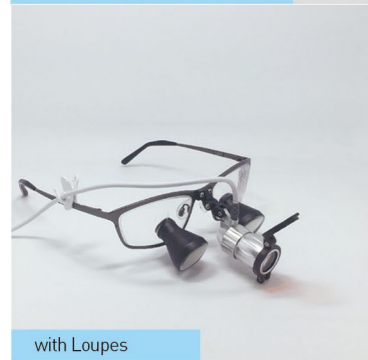
HL8300 Headlight



- ◆ Light Source: Our LED lamp has no heat of traditional Halogen headlight. With a color temperature of 5500 Kelvin, the light supplies bright, white, shadow-free light allowing the doctor to see tissue characteristics without distortion.
- ◆ Homogenous illumination of the whole field of view.
- ◆ Rechargeable: Enjoy the flexibility of operating the headlight using the rechargeable Lithium battery, free of the direct power source. It is one of the most comfortable lightweight headlamps and suitable for all kinds of surgery.
- ◆ Low-battery indicator light.
- ◆ Compatible with any Binocular Loupes of Zumax, Gallilei, Zeiss, Orascophic TTL, Orascophic Flip Up, Grendel Meier and Heine.
- ◆ Yellow filter reduces blue light, preventing premature curing of composite.
- ◆ Smart design, convenient for mobile diagnosis.



2300 mAh Battery Pack



with Loupes



with headband



Cordless headlight

	With Portable Battery Pack	With Cordless Battery Pack
Optical Specifications		
Illumination at 200mm working distance	>35000 Lx	>35000 Lx
Adjustable Range		
Direction of Illumination	Vertically $\pm 25^\circ$ adjustable	Vertically $\pm 25^\circ$ adjustable
Weight		
Head lamp	21g	21g
Electrical Specifications		
Illumination Source	Extremely bright light, 3W LED, continuous burning life of 20,000 hours	Extremely bright light, 3W LED, continuous burning life of 20,000 hours
Battery	Lithium battery 7.4V 2300mAh	Lithium battery 7.4V 1800mAh
Battery Run-time	> 9 hours	> 6 hours
Input voltage	100-240VAC	100-240VAC
Maximum Power input	15VA	24VA
Electrical Safety standard	IEC60601.1, class II equipment	IEC60601.1, class II equipment

HL8200 Headlight



- ◆ Light Source: Our LED lamp has no heat of traditional Halogen headlight. With a color temperature of 5000 Kelvin, the supplies bright, white, shadow-free light allowing the doctor to see tissue characteristics without distortion.
- ◆ Homogenous illumination of the whole field of view.
- ◆ Rechargeable: Enjoy the flexibility of operating the headlight using the rechargeable Lithium battery, can use without the direct power source. It is one of the most comfortable lightweight headlamps and suitable for all kinds of surgery.
- ◆ Low-battery indicator light.
- ◆ Compatible with any Binocular Loupes of Zumax.
- ◆ Yellow filter reduces blue light, preventing premature curing of composite.
- ◆ Smart design, convenient for mobile diagnosis.



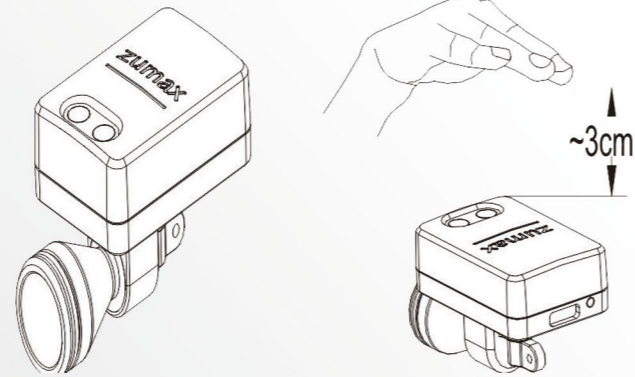
2300 mAh Battery Pack



With TTL Loupes

	With Portable Battery Pack	With Cordless Battery Pack
Optical Specifications		
Illumination at 200mm working distance	>30000 Lx	>30000 Lx
Adjustable Range		
Direction of Illumination	Vertically $\pm 25^\circ$ adjustable	Vertically $\pm 25^\circ$ adjustable
Weight		
Head lamp	12g	12g
Electrical Specifications		
Illumination Source	Extremely bright light, 1.6W LED, continuous burning life of 20,000 hours	Extremely bright light, 1.6W LED, continuous burning life of 20,000 hours
Battery	Lithium battery 7.4V 2300mAh	Lithium battery 7.4V 1800mAh
Battery Run-time	> 9 hours	> 6 hours
Input voltage	100-240VAC	100-240VAC
Maximum Power input	15VA	24VA
Electrical Safety standard	IEC60601.1, class II equipment	IEC60601.1, class II equipment

HL8260 Headlight (Cordless)



- ◆ Light Source: LED source with color temperature of 5000 K . White, shadow-free light allowing the doctor to see tissue characteristics without distortion.
- ◆ Rechargeable: Enjoy the flexibility of operating the headlight using the rechargeable Lithium battery, free of the direct power source. It is one of the most comfortable lightweight headlights and suitable for all kinds of surgery.
- ◆ Usable when it is charging.
- ◆ Battery indicator lights.
- ◆ Compatible with TTL Loupes of Zumax.
- ◆ Smart design, convenient for mobile diagnosis.



Can be installed on the glasses frame



Adapter and charging cable



Two batteries

With Cordless Battery Pack

Optical Specifications	
Illumination at 200mm working distance	>25000 Lx
Adjustable Range	
Direction of Illumination	Vertically $\pm 45^\circ$ adjustable
Weight	
Head lamp	31g
Electrical Specifications	
Illumination Source	3W LED, continuous burning life of 20,000 hours
Battery	3.7 V rechargeable Lithium battery(500mAh)
Battery Run-time	3-4h
Input voltage	100-240VAC
Maximum Power input	5V DC 10VA
Electrical Safety standard	EN60601-1, EN60601-1-2 Class II and internal electrical power source

Headlight and Loupes Combined Set



HL8200 Headlight combined with DF-series Binocular Loupes (Deflection type)



HL8200 Headlight combined with SLK Binocular Loupes



HL8200 Headlight combined with SLT TTL Binocular Loupes (Kepler Optics)



HL8200 Headlight combined with SLH Binocular Loupes (Kepler Optics)



HL8200 Headlight combined with SLE Binocular Loupes



HL8200 Headlight combined with SLT Binocular Loupes (Titanium Frame)



HL8300 Headlight combined with SLE Binocular Loupes



HL8300 Headlight combined with SLF Binocular Loupes



HL8200 Headlight combined with SLF Binocular Loupes



HL8200 Headlight combined with SLT Binocular Loupes (Sport Frame)



HL8200 Headlight combined with SLE Binocular Loupes (Kepler Optics)



HL8300 Headlight combined with SLH Binocular Loupes



HL8000 Headlight combined with SLE Binocular Loupes



Cordless HL8000 Headlight combined with SLE Binocular Loupes



Cordless HL8200 Headlight combined with SLE Binocular Loupes



Cordless HL8300 Headlight combined with SLE Binocular Loupes



HL8200 Headlight combined with SLH Binocular Loupes