



Taking care from the beginning

Density405

Cugar

Industrias Pardo

 Los Ángeles nº 5. Pol. Ind. Centrovía, 50198 La Muela (Zaragoza, Spain)

 www.pardo.es

 Tel: 976 300 033 - Fax: 976 320 647



About us

“Your care, our mission”

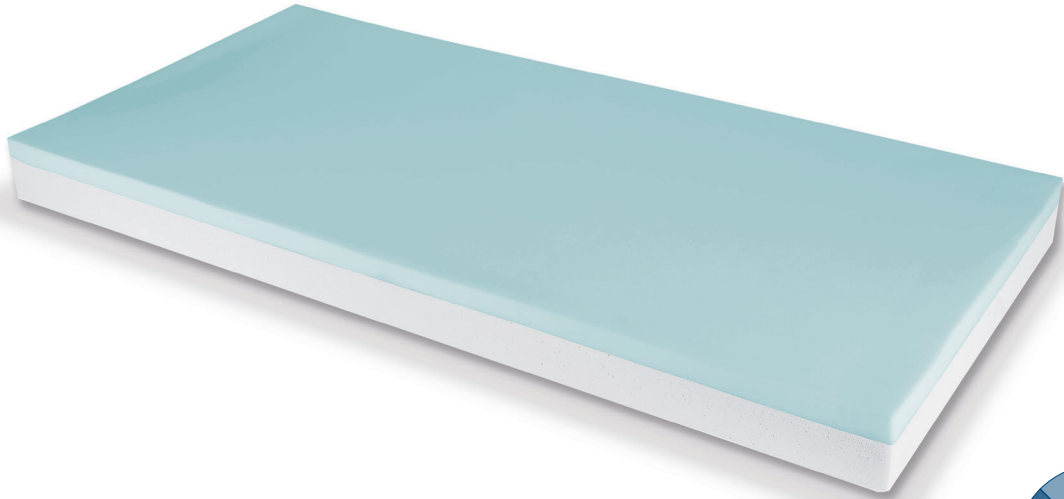
With over 40 years of experience, PARDO is one of the leading international manufacturer of hospital beds and furniture and a provider of modern smart room solutions for hospitals and nursing homes.

Our ongoing research and development in the aim of finding new solutions is an important issue of our commitment to provide our customers with unique products based on technology and high quality.

A PARDO essential pillar is to offer wide range and quality products as well as the best service our customers deserve.

PARDO has modern manufacturing facilities located in Zaragoza (SPAIN), where all our products are manufactured. We only collaborate with approved suppliers, who are revised according to the highest quality standards. Our modern, flexible and advanced production is based on principles of efficiency, what means that we can customize our production very quick and effectively to meet our customer's needs.

Density405



Core

Foam mattress, 85x200 cm, especially designed mattress to be used in hospital and health centres, for patients with medium ulceration risk, grade III according to Norton scale, as well as for patients with ulcers or sores up to grade II.

- Foam core with two layers.
- Base with HR polyurethane foam base freefoam (35 kg/m³). Due to its porosity, allows a high breathability and hygiene.
- Upper layer made of high density thermo sensible viscoelastic foam 85 kg/m³



HR Polyurethane + Viscoelastic



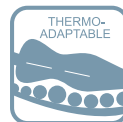
Base density



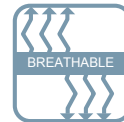
Viscoelastic density



Natural latex free



Thermo-adaptable material



Breathable material



Anti-allergy material

Core characteristics

- The Viscoelastic foam provides higher resistance to subsidence, ensuring a total ergonomic posture.
- Adaptation capacity of the thermo-sensitive core, achieve a greater contact surface than a standard mattress, obtaining low capillary occlusion rates and preventing the PU's appearance.
- The memory effect of viscolastic decreases the appearance of brands in the core, allowing the use of this mattress for a long time.
- It's a firm mattress, because it has a high density HR Foam, that avoids the contact between patient and mattress.
- Framed lower mattress layer for an optimal patient pressure whilst he is placed in bed. High adaptability of the mattress to the bed, promoting its articulation.
- Symmetric core allows using indistinctly the head or feet areas
- All foams are Oeko-Tex class I and REACH certified.
- The maximum patient weight (MPW) is 230 kg.

General characteristics

Symmetric Use

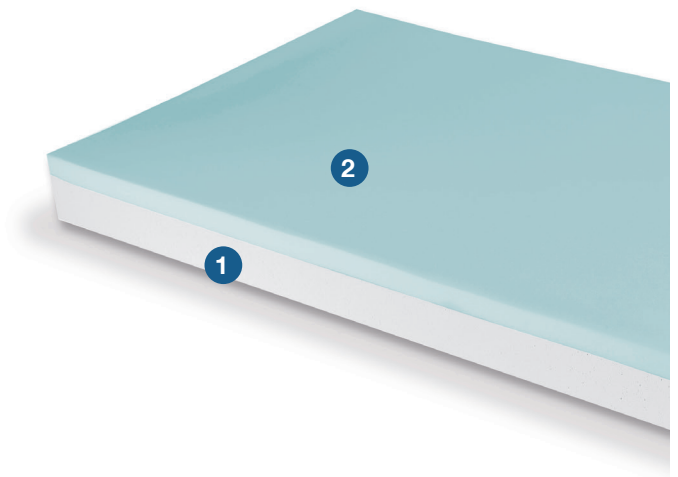
Specially mattress designed for hospitals or centres of sanitary assistance, the mattress dimensions are: 85 x 200 cm.

Total height: 14 cm.

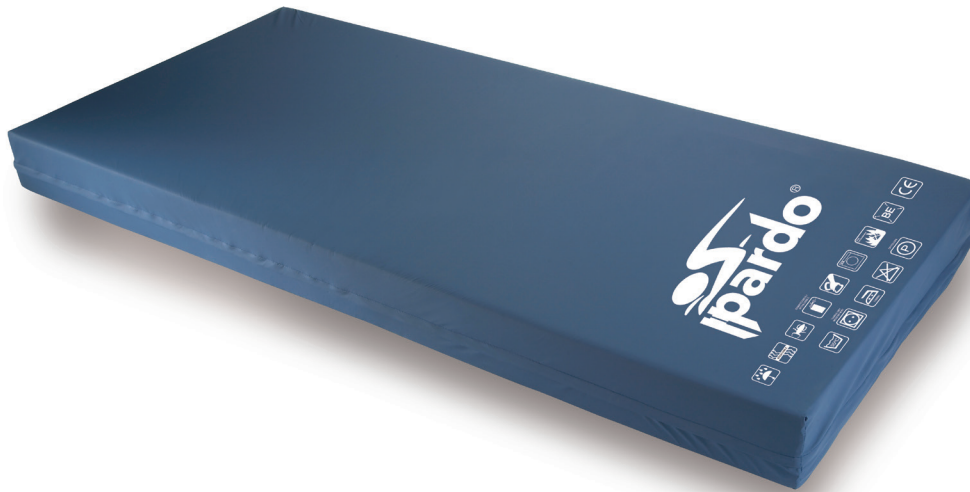
Total weight: 8 kg.

Core

- 1 | HR Foam: 8'5 cm. and 2'7 kPa.
- 2 | Viscolastic: 5'5 cm. and 2'9 kPa



Cover



Cover

Cover intended to protect the mattress, complying with the most exigent technical and quality features in all fields.

- 100% bielastic fabric cover, tissue made of polyester (60%) with fire retardant polyurethane coating (40%).
- With U shape zipper and flap.
- Heat-sealed zipper to avoid liquid penetrations.

Characteristics

- Tissue made with two threads with same size in warp and ultrasound made.
- High elongation cover in welt (153%) and warp (139%), acquiring a bielastic high character, avoiding tissue wrinkles.
- High resilience fabric longitudinal tensile strength, 380 N and 253 N transversal.
- 175 g/m² weight.
- Waterproof fabric, it can support at least 200 cm. water column.
- Water vapour breathable cover, minimum 500 g/m²/24hours.
- This cover complies with the fireproof regulation BS7175 CRIB 5.
- Free of dangerous compounds and chemicals products: Lead, mercury, PBB. According to RoHs and REACH regulations.
- The fabric has Oeko-Tex, class I certification.
- Resistant to autoclave sterilization at 134°C.
- Machine washable at 95°C maximum temperature. Medium temperature tumble drying. Medium temperature ironing, only on the outside of the fabric. Do not use chlorinated or whiteners, just soapy water. Dry cleaning supported but trichloroethylene.

Quality

An essential pillar in PARDO is the product wide range and quality offered to our customers. All beds produced in our facilities are thoroughly tested by our staff and by a PARDO designed quality control machinery, where product functions and quality are controlled.

Several tests are done both internally and by external accredited agencies. All models are subjected to strict life testing procedures, which are widely overtaken, what ensure the current standards compliance in order to certify the beds.

External audit from ENAC accredited and notified agencies are made to endorse our quality system, environmental management and sanitary product.





Industrias Pardo

📍 Los Ángeles nº 5. Pol. Ind. Centrovía, 50198 La Muela (Zaragoza, Spain)

🌐 www.pardo.es

☎ Tel: 976 300 033 - Fax: 976 320 647