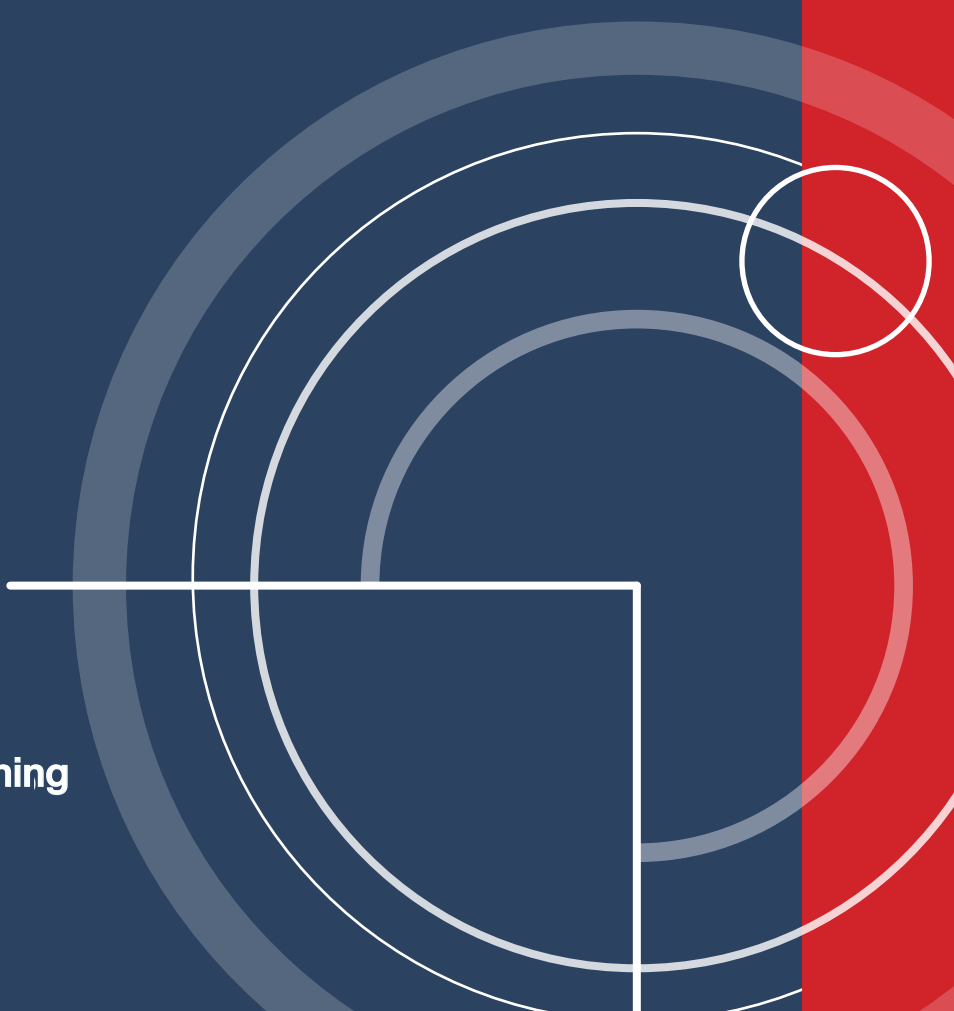


HITECH



Taking care from the beginning





“The highest technology to offer the best rest”

About us

With more than 40 years of experience, PARDO is one of the leading international manufacturer of hospital beds&furniture and a provider of modern smart room solutions for hospitals and nursing homes.

Our ongoing research and development into new solutions is an important part of our commitment to provide our customers with unique product solutions based on technology and high quality.

High quality product is an essential and central part of PARDO, as its mandatory for us to provide top quality products and service to our customers.

PARDO has modern manufacturing facilities located in Zaragoza, Spain and all our products are manufactured “in house” and we are only using suppliers which all are approved and checked by of our high quality standards. Our production is modern, flexible and advanced as it’s based on the LEAN principles. This means, that we can customize our production very quick and effective to the meet our customer’s needs.



Patient

Ease of handling
Comfort
Easy access



Nurse staff

Patient control
Easy cleaning
Pre-programmed stances



Administration

Multiple configurations
Resistente and durable
Versatile



ICU bed HiTech

HiTech ICU bed is fitted with the most advanced technology for patient intensive care.

Its 3 rectangular raising and lateral tilt columns are guarantee of safety and durability. Bed lateral tilt allows better oxygenation to avoid unforeseen difficulties and makes easy patient daily care.

There are multiple options in order to satisfy patient care necessities, optimizing job of the nursing and assuring the results.



HiTech bed main features:

- Linear actuators IP66 protection level.
- X-ray radiolucent backrest.
- Maximum safety load of 250 kg. (SWL)
- Mattress platform in HPL panel.
- Extensible foot section 200 mm.
- Color options and logo on vinyl.

Side rails with anti-fall protection system which blocks lateral tilt movement when side rails are down.

Double regression system in thorax area (16 cm) which reduces the risk of pressure ulcers.

X-ray radiolucent backrest with plate holder included.

It has touch screen in footrest to control and manage the bed.



Stances

Prevention and patient safety are essential requirements in a hospital. Therefore HiTech hospital bed has multiple therapeutic positions to assist and accelerate patient recovery.

Lateral tilt movement

Lateral tilt movement (20°) helps to prevent health unforeseen difficulties in patients in critical state and support actively its treatment. HiTech acts in prevention of pressure ulcers as well as in prevention of difficulties in circulatory system and pulmonary waterlogging risk reduction.

Post-operative care, patient hygiene, scratcher transfers, etc. mean an appreciable physical effort for nursing team, which is associated with possible injuries. Thanks to HiTech can realise lateral tilt movement, all these tasks are much more easy and simple.

Side rails have anti-fall protection system which blocks lateral tilt movement when side rails are down.



Trend position

The patient is supine on a bed or tilted table so the head is at a lower level than the feet. This position is used whenever it is necessary for the blood to flow to the brain in events like a syncope.

Anti-Trend Position

The patient is supine with his head tilted at a higher level than the feet. It facilitates blood circulation at the level of the extremities, in some surgical procedures (goiter), in case of respiratory problems, if hiatal hernia.

Cardiac chair position

Therapeutic essential position in hospital beds.

The thorax plane regression greatly facilitates the patient comfort and prevents pressure on the abdominal area. It reduces the number of patient transfers to the chair, enhancing comfort and safety.

Maximum height position

This fully horizontal position in which the bed is lifted to its maximum height. This makes easy examination of the patient by the medical team as well as the maintenance and hygiene.

Minimum height position or CPR

Completely flat, the bed moves down to its minimum height. It increases safety, prevents damage from falling and facilitates the access to bed for the patient.



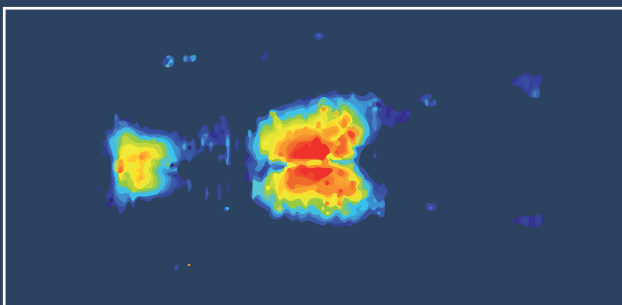


Safety

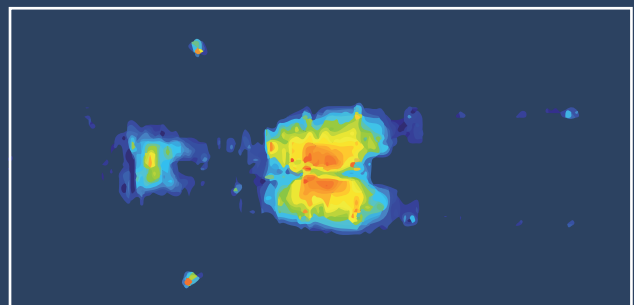
Double autoregression

Changing the stance is the easiest and most effective way to avoid bedsores, when the patient's posture is changed regularly, the excessive pressure effect is avoided.

The repositioning of hospitalized patients is the easiest and most effective way to prevent pressure ulcers (Upp's). These ulcers occur in patients who stay bedridden for a long time and with reduced mobility, therefore, the prevention provided by the bed through this regression movement slows down and prevents their apparition, since these postural changes relief the pressure over the skin.



Bed pressure map without autoregression



Bed pressure map with autoregression



Braking alarm (optional)

HiTech has an **acoustic alarm** when it's not locked, thus the bed can't be moved unintentionally, preventing risks and dangerous situations which could happen.

If it's plugged in, an acoustic signal warns it's necessary to brake the bed or unplug it before move it.



CPR in backrest

The bed has an **emergency CPR system** to facilitate the cardiopulmonary maneuvers removing the need to use any handheld control. The system is activated through two levers placed on either side of the bed. These red colored levers are easy to use and locate. This lever is accessible regardless the position of the siderail, both in upper or folded position.



Headboard and footboard with locking system.

Removable polypropylene headboard and footboard. A manual locking without tools allows transporting the bed without gaps or risks. The one-handed extraction makes them very intuitive and easily removable. The caregivers can reach the patient's easily and quickly to perform any therapeutic tasks required. The headboard and footboard are equipped with ergonomic handles to help when moving the bed.



Tilt angle indicators in side rails

Both rails have indicator degrees with a unique new design to facilitate proper positioning of the patient increasing the comfort.

The horizontal inclination angle is indicated in degrees on the backrest siderails, whereas the trend and anti-trend inclinations are indicated in the foot end siderails.



Transport becomes easy

Transport and rolling system

Transport of patients represents one of the most common tasks of the nursing staff and facilitating such work is vital. The HiTech high maneuverability thanks to its steering wheel and to a greater extent thanks to 5th wheel, makes the control of the bed significantly easier.

This possibility stabilizes the control of the bed and improves the patient comfort during transportation. In addition, the maneuverability in reduced spaces is improved. Headboards and footboards with the ergonomic handles also facilitate the control of the bed.

Every improvement applied to the transfer efficiency and speed with no impact in the patient comfort represents a benefit to his wellbeing and facilitates his stay.



Casters

HiTech has four 150mm dual casters with high resistance and protection against rust, and are very quiet when moved; This makes the bed perfect for use in hospital environments.

The casters facilitate the movement in small areas (small rooms elevators, ...) thanks to the incorporated tread, reducing the friction and facilitating the movement.

There is a 5th wheel spring-loaded which improves maneuverability.



Braking pedal

Located at the foot of the bed, the multifunction pedal controls the centralized four-casters braking system and the activation of 5th wheel.

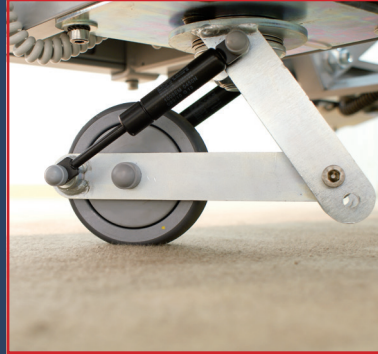
Including all these functions centralized in a single element, such is this lever, facilitates the work of caregivers when transferring the patient from one place to another.

HiTech has an acoustic alarm when it's not locked. If the bed is plugged in, an acoustic signal warns it's necessary to brake the bed or unplug it before move it.

Fifth steering wheel

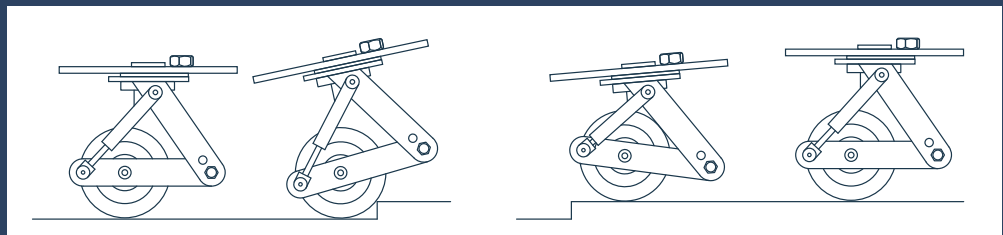
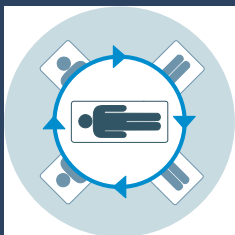
The 5th wheel simplifies steering the stretcher in the hallways (keeping a straight line). The added rolling point just in the middle of the stretcher reduces the force required in tight and narrow corners (elevators or corners).

360° Maneuvering



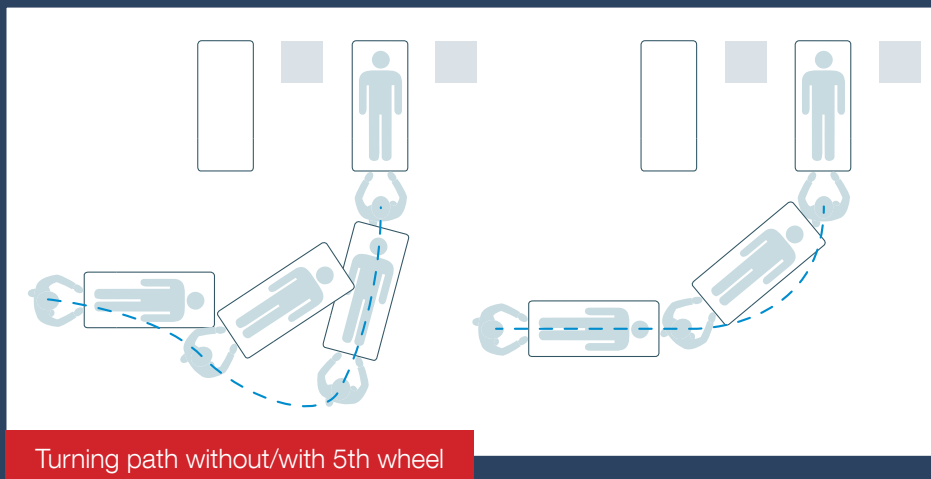
○ An additional advantage of the 5th wheel consists in the possibility of 360° turns without additional movements.

Antistatic, directional and spring-loaded



Spring-loaded system avoids damage overcoming small steps.

5th wheel is antistatic, i.e., it can lead to ground static electricity thanks to the composition of the wheel.





Protection

Side rails

Foldable full length split siderails on both sides of the bed, with anti-entrapment system, according to IEC 60601-2-52 standard, maximum full-length protection, from the headboard to the footboard.

They are very fast to operate (only one hand) and the gas spring brings a slow and controlled descent avoiding slams. Furthermore, the siderails have an anti-entrapment system that prevents blocking in its lowermost position. The bending radius is very small, adapting to confined areas.

New design with a more ergonomic handle to improve the grip surface provided to the patient during bed entry and exit.

High-resistance polyolefin instead of ABS. Our siderails, thanks to their geometry and their internal nerves system, enjoy better mechanical characteristics than the ABS, with additional advantages such as:

Lighter

Greater chemical resistance to cleaning agents and abrasives.

Greater recyclability (> 50% ABS).



Protective bumpers

Cylindrical side protections with an internal helical mesh. The length of the cylinder enhances the distribution of the energy involved in the impact in a more effective way than the disk solution due to the bigger surface.

In addition, the design based on internal helically shaped radii allows a greater deformation and absorption of the kinetic energy of the impact avoiding / minimizing its transmission to the wall.

This solution reduces damages to the facilities and helps to reduce maintenance costs of hospital facilities since they suffer less damage as a result of friction / shock caused by the beds hitting the walls, corners, etc.



Customization

Siderails, headboards and footboards, can be customized to include any color vinyl, any logo or graphics chosen by the hospital.





Control

Prevention and patient safety are mandatory functions in hospitals. Therefore, the HiTech hospital bed is equipped with different and varied therapeutic stances to facilitate and accelerate the patient recovery.

Side rail controls (optional)

The siderails incorporate membranes designed to control the up/down movements of the bed and bed base. There are too control for nursing call and to turn on the light under the bed.

These membranes have an auto-lock system after 30sec. to avoid involuntary access.

Touch screen for nursing control (optional)

It is designed to control the movements of the bed, lock or unlock functions and even include therapeutic and emergency pre-programmed positions making faster and more effective the caregivers' job.

The screen is in the footboard and it's easy of handling and intuitive.



Pre-programmed and emergency functions:

- Cardiac chair.
- Emergency raising or lowering.
- Maximum height position.
- Emergency trend.

Basic functions are:

- Backrest lifting and lowering.
- Extremities lifting and lowering.
- Simultaneous lifting and lowering.
- Lifting and lowering the bed.
- Trend / Anti-trend.
- Lateral movement.



Battery

The battery is located on the chassis of the bed, and performs the movements of the bed if it is unplugged or the power goes out, in any case allows over 300 complete movements.

There is a warm signal in case of low battery.

- Rated capacity: 1.3 Ah 24V.
- Max.charge current: 500 mA.



Weighing system (optional)

The weighing systems allows controlling patient weight without leaving the bed.This system uses 4 cells which hold bed frame weight, mattress and patient. The control box measures 4 cells signal and manages user interface through touch screen in footboard.

There is a bed exit alarm system in case of the patient leaves the bed.



IP66

The drive system and electronic equipment (controls), comply with IP66 standard against water and dust. The IP66 code (international rating of protection against water and objects ingress) determines the degree of protection against the entry of a number of elements with potential risk.

Protection against solid particles and liquids:

Sealed against dust.

No entry of dust; complete protection against contact.

Powerful water jets.High power water jet (12.5 mm nozzle) projected against the housing, from any direction, it has no detrimental effect.



Comfort for users

Mattress platform in HPL

This is the most technically advanced material at the present for hospital bed bases. Its main advantages are:

Superior mechanical shock resistance, impacts, scratches, etc.

Approved for food contact. Scratchproof.

Easy to clean, resistant to chemicals.

Crack resistant to impact and abrasion. Color is not altered.

n:

- High resistance to abrasive / cleaning agents.
- Completely smooth surface with no rough touch.
- Fireproof / waterproof.
- Superior mechanical shock resistance, impacts, scratches, etc.
- Easy to clean.



Knees and feet stances

The tilt of the knee and feet sections is assisted by a Rastomat, adjustable at 7 points, thus improving ergonomics and patient comfort.



The HiTech hospital bed includes many options to make the stay in the hospital more convenient and comfortable for the patient and for the physician and nursing staff, who work every day with the hospital furniture in the hospital like the electrical beds.

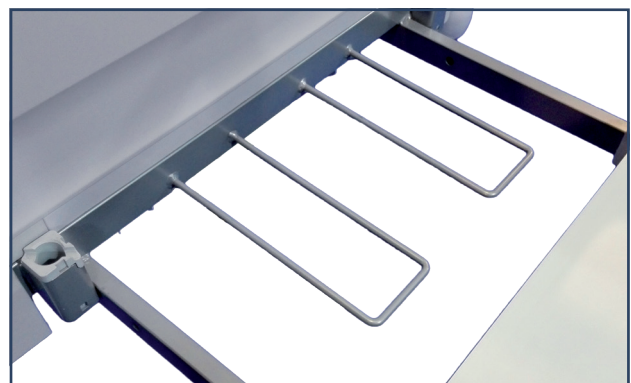
Rx and bed base

The HiTech base includes a guide system to incorporate an X-ray plate holder tray and a radiolucent HPL in the thorax section. In consequence, all the beds in the hospital are radiolucent on the thorax area, reducing significantly the transfers, the inconvenience to the patients and the caregiver's workload.



20cm extendable

Every day people is higher and, in too many cases, there is a tendency to obesity. Therefore, beds have to be able to adapt these patients without lowering its comfort and well-being. HiTech has a bed base width enough and an extendable system to lengthen the bed with additional 20 cm.





Technical information

Dimensions and weights

Total length with headboard and footboard	2200 mm. ± 10 mm.
Total width with side rails	970 mm. ± 10 mm.
Bed base height minimum	420 mm. ± 5 mm.
Bed base height maximum	820 mm. ± 5 mm.
Extendable length	200 mm.
Bed base section length	790 / 170 / 320 / 620 mm.
Double autoregression	165 mm.
Backrest tilting angle	$70^\circ \pm 5^\circ$
Extremities and feet tilting angle	$45^\circ / 18^\circ \pm 2^\circ$
Trendelenburg/ Antitrendelenburg	$18^\circ / 18^\circ \pm 2^\circ$
Lateral tilting angle	$20^\circ \pm 2^\circ$
Maximum patient weight (MPW)	205 kg.
Safe working load (SWL)	250 kg.
Unladen bed weight	150 kg.

* Dimensions and technical information may change depending on the different configuration and options.

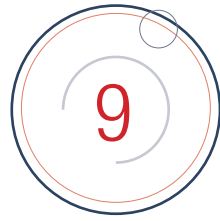
Electrical information

Elevation system	Columns
Backrest elevation system	Lineal motors
Extremities elevation system	Lineal motors
Voltage and frequency	110 V - 230 V / 50 - 60 Hz
Electric shock protection - Liquid penetration protection	Clase I / Tipo B / IP66
Maximum consumption	Máx. 3 15A (máximo 400 W)
Intermittent motor operation	10% 2 min. - 18 min.

Certificates

Industrias Pardo S.L. has the following certificates: UNE-EN ISO 9001, UNE-EN ISO 13485, UNE-EN ISO 14001.

NewCare V3 bed meets the following standards: UNE-EN ISO 12100, UNE 20324, UNE-EN 60204-1, UNE-EN 60601-1, UNE-EN 60601-1-2, EN 60601-2-52.



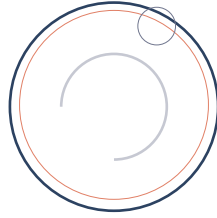
Quality

One of PARDO essential foundations consist in the wide range and quality products, along with the quality service we provide to our customers. All beds manufactured in our factory are thoroughly checked by our operators and tested by a quality control machine designed by PARDO, which checks the operation conditions of use and product quality.

Numerous internal and external trials are run by reputed and accredited agencies. All the models are subjected to a demanding test of life, which far exceed the established standards, complying with the current regulations required to certify our products.

External audits are carried out by agencies notified and accredited by ENAC, supporting our quality systems, environmental management and health products.





Pardo in the world





Los Ángeles nº 5. Pol. Ind. Centrovía, 50198 La Muela (Zaragoza, España)

www.pardo.es

Tel: 976 300 033 - Fax: 976 320 647